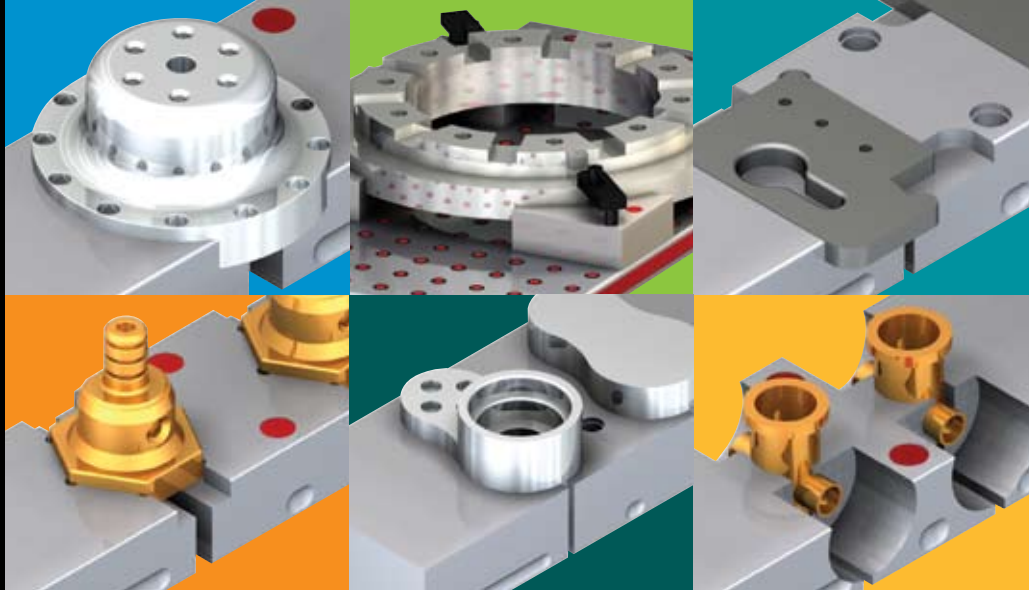




# SAMPLE SOLUTIONS

Simply Flexible.



# EFFICIENCY THROUGH WORKHOLDING INNOVATION

Chick works to increase productivity by reducing inefficiencies of CNC Machining Centers. We do this simply by applying workholding solutions.

We work with hard-working, successful companies that want to solve machining challenges, improve their operations, and make more money.

## **Chick can work with you to:**

- Reduce set up times
- Minimize part change time
- Increase cut time
- Gain efficiency with repetitive machine operations
- Gain WalkAway time for reduced labor costs
- Minimize no operator available wasted time

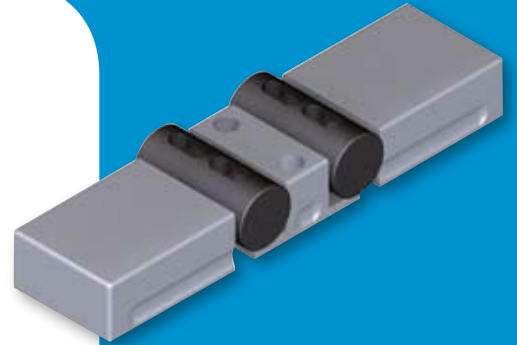
Our QwikChange Accessories offer a flexible, affordable solution. If you would like to see additional sample solutions or have a part holding challenge, please contact our Customer Care Team at 800-332-4425 or visit us on the web at [www.ChickWorkholding.com](http://www.ChickWorkholding.com).

# CYLINDRICAL PARTS

Qwik-Lok

Multi-Lok

Indexer Subsystem



## Description:

Standard Dual Station Machinable Jaws holding two parts.

Qwik-Lok

Multi-Lok

Indexer Subsystem



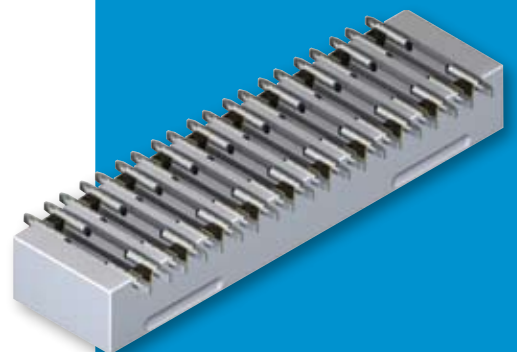
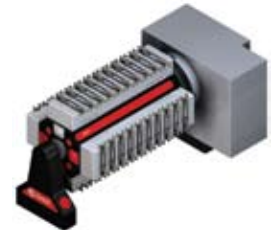
## Description:

Standard Single Station Machinable Jaws cylindrically contoured to part.

Qwik-Lok

Multi-Lok

Indexer Subsystem



## Description:

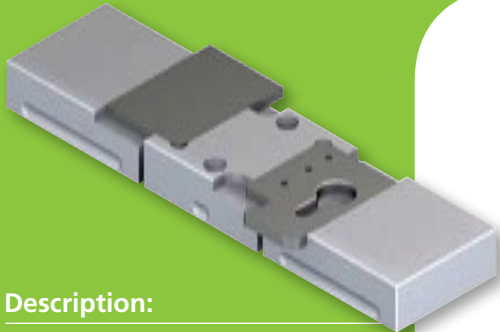
High Machinable Faceplate holding multiple small parts.

# RECTANGULAR PARTS

Qwik-Lok

Multi-Lok

Indexer Subsystem



**Description:**

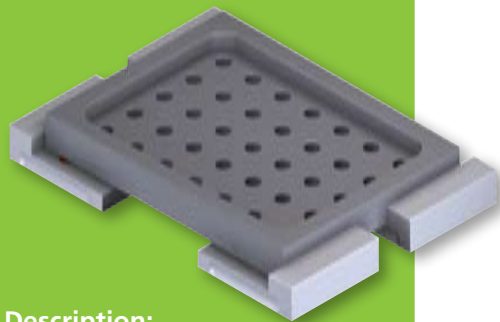
Standard Dual Station Machinable Jaws with machined location features.



Qwik-Lok

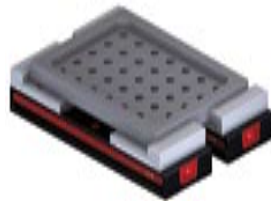
Multi-Lok

Indexer Subsystem



**Description:**

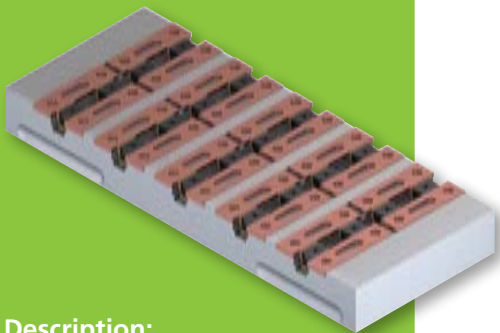
Standard Single Station Jaws for large parts.



Qwik-Lok

Multi-Lok

Indexer Subsystem



**Description:**

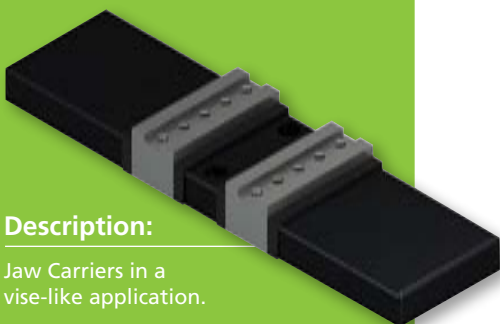
Wide Machinable Faceplate holding twenty rectangular parts.



Qwik-Lok

Multi-Lok

Indexer Subsystem



**Description:**

Jaw Carriers in a vise-like application.



# HEXAGONAL PARTS

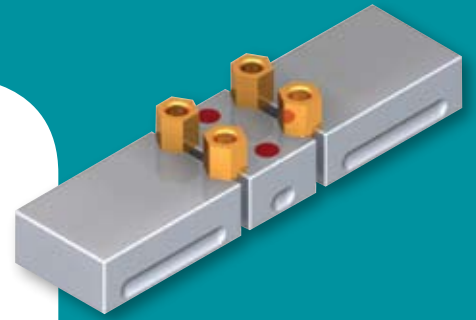
Qwik-Lok



Multi-Lok



Indexer Subsystem



**Description:**

Standard Dual Station Machinable Jaws clamping four parts.

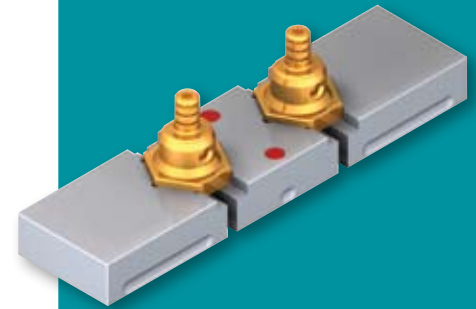
Qwik-Lok



Multi-Lok



Indexer Subsystem



**Description:**

Standard Dual Station Machinable Jaws contoured to part shape.

# CASTING PARTS

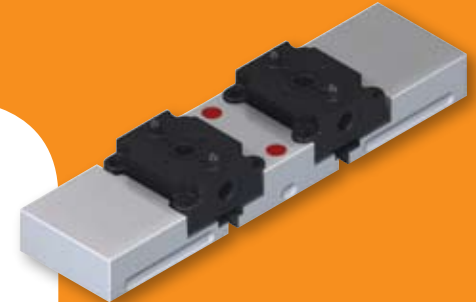
Qwik-Lok



Multi-Lok



Indexer Subsystem



**Description:**

Standard Dual Station Machinable Jaws with fixed jaw location points.

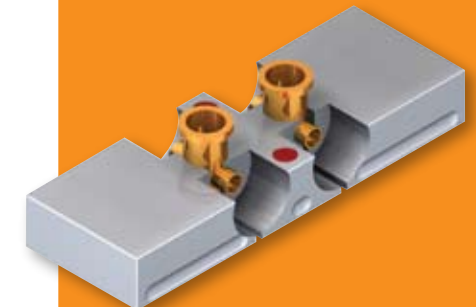
Qwik-Lok



Multi-Lok



Indexer Subsystem



**Description:**

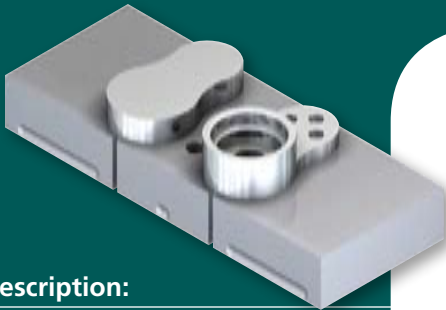
High Dual Station Machinable Jaws cut for part accessibility and chip removal.

# IRREGULAR PARTS

Qwik-Lok

Multi-Lok

Indexer Subsystem



**Description:**

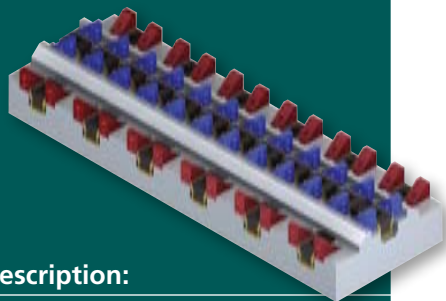
Oversized Dual Station Machinable Jaws contoured to part shape.



Qwik-Lok

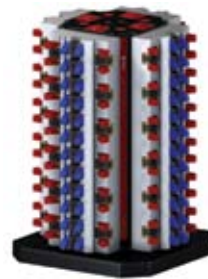
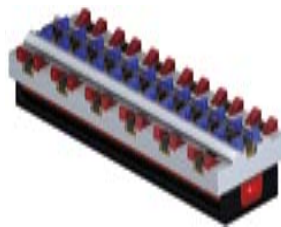
Multi-Lok

Indexer Subsystem



**Description:**

Wide Machinable Faceplate holding difficult to clamp parts.

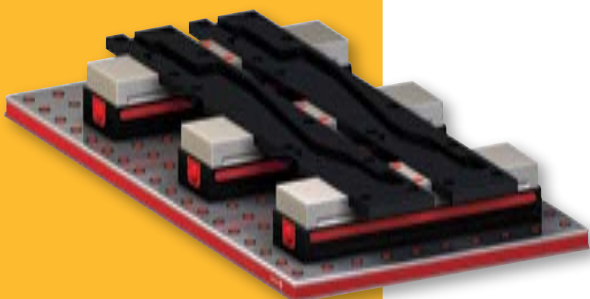


# FOUNDATION SOLUTIONS



**Description:**

Foundation Blox mounted to a Foundation.

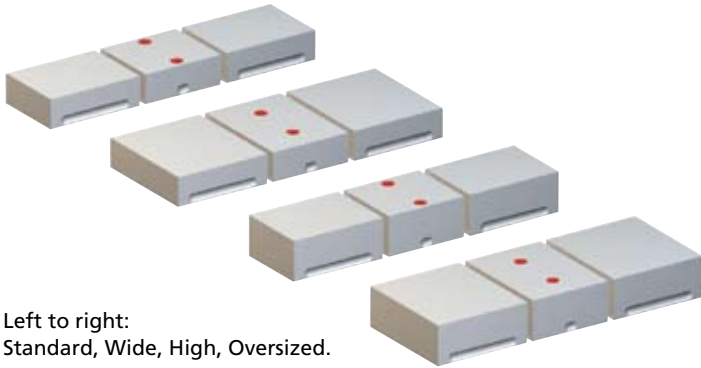


**Description:**

Multiple Qwik-Loks mounted to a Foundation holding large parts.

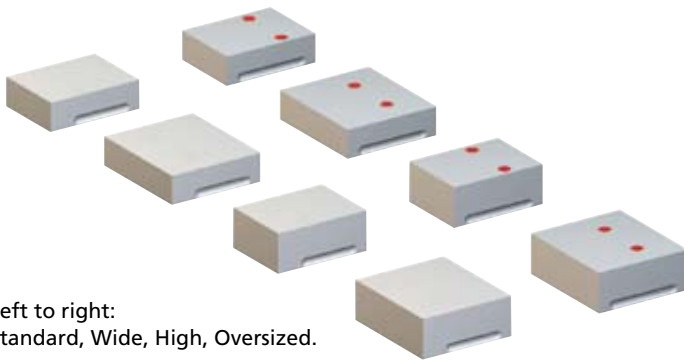
# QWIKCHANGE™ ACCESSORIES

## Dual Station Jaws



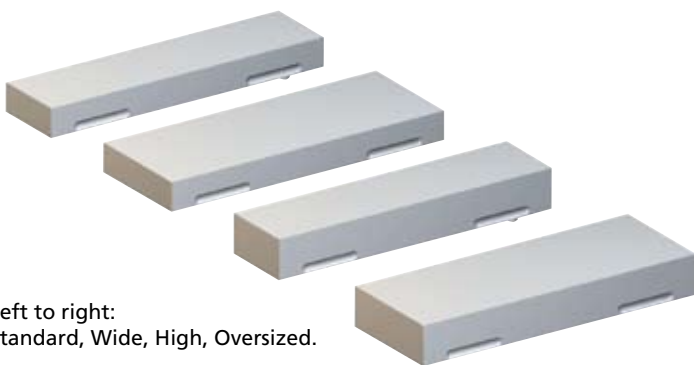
Left to right:  
Standard, Wide, High, Oversized.

## Single Station Jaws



Left to right:  
Standard, Wide, High, Oversized.

## Machinable Faceplates



Left to right:  
Standard, Wide, High, Oversized.

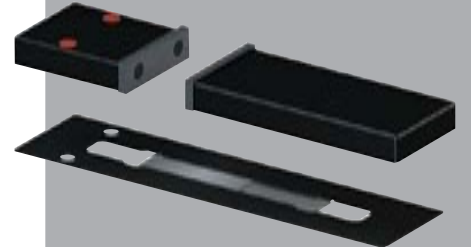
## Jaw Carriers



Single Station Deluxe Set



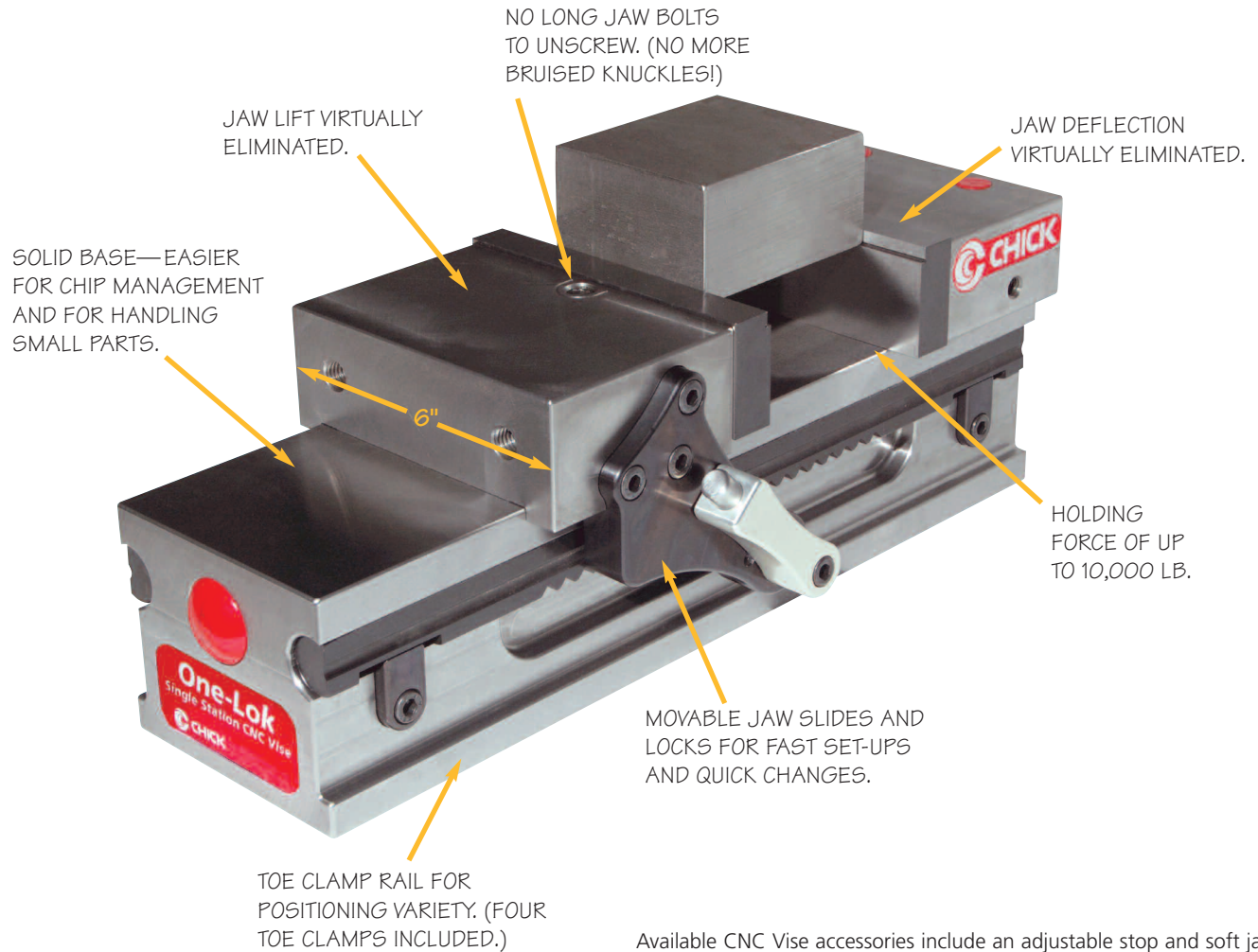
Dual Station Set



Single Station Set

# You've got to CNC this!

The new One-Lok Single Station CNC Vise from Chick.



Available CNC Vise accessories include an adjustable stop and soft jaws.

**CNC** the  
better way  
with a One-Lok  
Single Station CNC Vise

The first of its kind, the One-Lok was designed and built from the ground up for use in CNC milling—to offer dramatic improvements in speed, precision, and versatility. As a single station CNC Vise it is ideally suited for job shops, tool & die shops, prototype work, or other small batch (1-20) CNC milling applications.

The One-Lok Single Station CNC Vise is now in production for delivery in November 2008.





500 Keystone Drive  
Warrendale, PA 15086  
Phone: 724-772-1644  
1-800-332-4425  
Fax: 724-772-1633  
[www.ChickWorkholding.com](http://www.ChickWorkholding.com)

