

**Precision meets Motion**



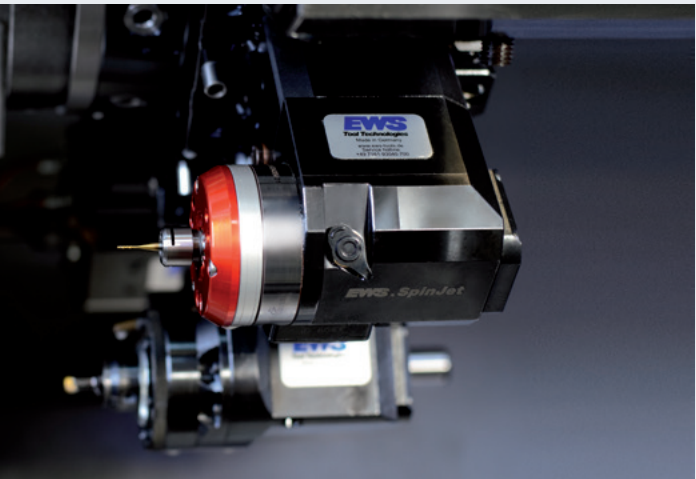
**EWS .SpinJet**

**Driven by Coolant**



Scanner et accéder  
à des informations  
en ligne

**EWS**  
**Tool Technologies**



# EWS . SpinJet

Driven by Coolant

## Propriétés

- multiplicateurs de vitesse alimenté par le liquide de refroidissement

utilise l'alimentation en liquide de refroidissement du mandrin de la machine

- écran sans fil pour l'affichage de la vitesse en temps réel

permet une mesure et une surveillance en continu pendant le traitement sur la machine

## Features

- Coolant driven spindle

uses existing machine coolant flow, to rotate the HSM Jet spindle without an additional energy source

- Wireless real time rpm monitoring

allows to optimize the cutting tool's machining conditions according to the actual rotation speed in the workpiece



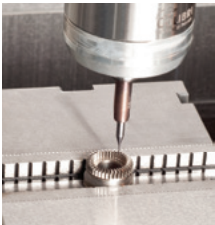




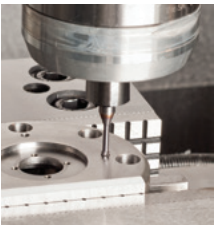
# DRIVEN BY COOLANT

## Applications / Applications

Fraisage  
Milling



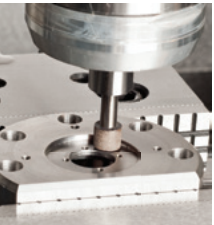
Fraisage de filetage  
Thread Milling



Perçage  
Drilling



Meulage radial fin  
Grinding



Ébarbage  
Chamfering



Gravure  
Engraving



# HIGHSPEED PRECISION MACHINING UP TO 60,000 RPM

Type de mandrin Jet HSM	SJ 20			SJ 30			SJ 40		
Vitesse mandrin [mille tr/min]** Rotational Spindle speed [krpm]	20*	30*	40*	30*	40*	50*	40*	50*	60*
Plage de pression du liquide de refroidissement [Bar]*** Coolant pressure range [bar]	20	30	40	20	30	40	20	30	40
Plage de débit du liquide de refroidissement recommandée [tr/min] Recommended coolant flow rate range [l/min]	12-18			12-18			12-18		
<b>Fraisage / Milling</b> Diamètre d'outil recommandé [mm] Recommended Cutting tool diameter [mm]	2.0-3.5			1.0-2.5			0.3-1.2		
<b>Perçage / Drilling</b> Diamètre d'outil recommandé [mm] Recommended Cutting tool diameter [mm]	≤ 2,0			≤ 2,0			≤ 1,2		
<b>Affûtage / Grinding</b> Diamètre d'outil recommandé [mm] Recommended Cutting tool diameter [mm]	≤ 10,0			≤ 10,0			-		
<b>Fraisage de filetage / Thread milling</b> Diamètre d'outil recommandé [mm] Recommended Cutting tool diameter [mm]	≤ M5			≤ M5			-		
<b>Chanfreinage &amp; gravure / Chamfering &amp; Engraving</b> Diamètre d'outil recommandé [mm] Recommended Cutting tool diameter [mm]	≤ 6 mm Tige de l'outil tool shank			≤ 6 mm Tige de l'outil tool shank			≤ 6 mm Tige de l'outil tool shank		
Vitesse de coupe recommandée [m/min] Recommended cutting speed [m/min]	pour acier / for steel ≤ 200								
	pour aluminium / for aluminium ≥ 200								

\* vitesse mandrin approximative  
 \*\* se base sur une pression du liquide de refroidissement min. de 20 bars et un débit de 12 l/min  
 \*\*\* pression du liquide de refroidissement recommandée 30-40 bars

\* approximately rotational spindle speed  
 \*\* 20 krpm based on min. coolant pressure 20 bar & min. flow rate 12 l/min  
 \*\*\* recommended coolant pressure 30-40 bar (435-580 psi)

NG

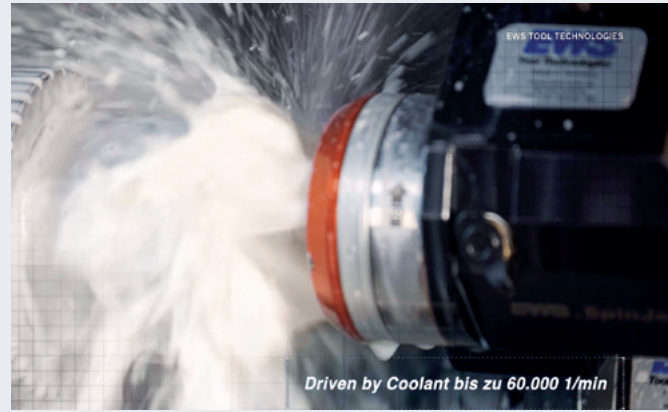
### YellowLine - SJ20



### RedLine - SJ30



### BlueLine - SJ40



## **EWS.SpinJet**

### **Avantages**

- permet d'économiser jusqu'à 70 % du temps de traitement (entre 20 000 et 60 000 1/min)
- traitement haute vitesse
- usure moindre des outils et de la machine

### **Configurations machine requises**

- pression du liquide de refroidissement d'au moins 20 bars, débit de 12 l/min

### **Advantages**

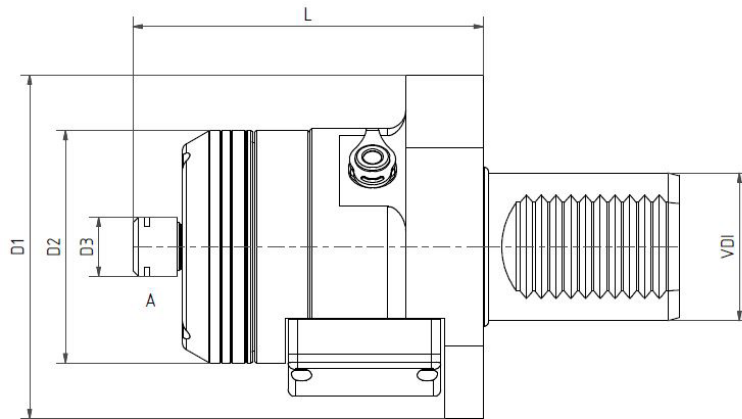
- save up to 70% of your machining time (20,000 up to 60,000 rpm)
- high speed cutting
- less tool and machine wear

### **Machine requirements**

- Min. 20 bar (290 psi) coolant pressure, 12 l/min flow rate

## SpinJet Axial VDI

*SpinJet axial VDI*



### N° / No.

40...12SJ...

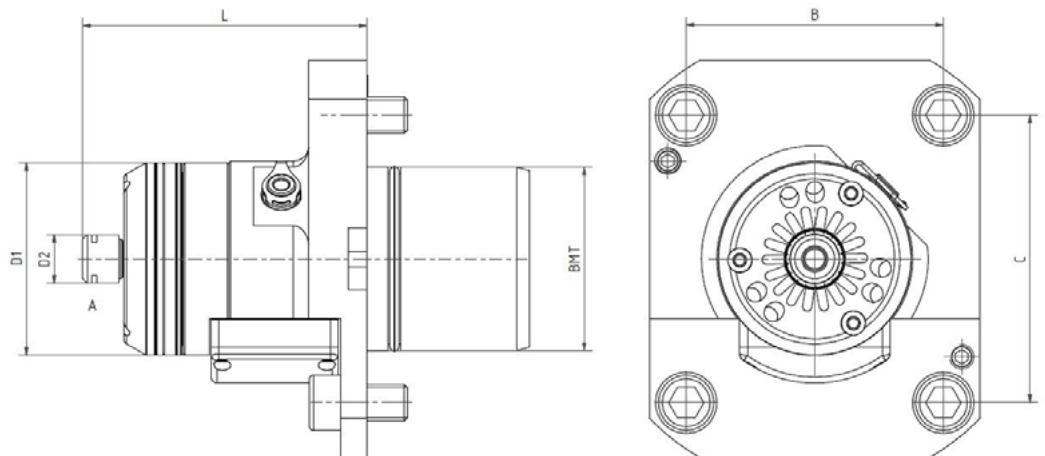
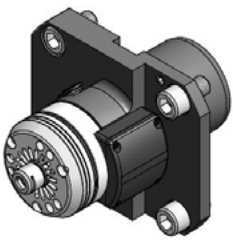
### Accessoires / Accessories

Affichage de la vitesse /  
rpm-display  
N° écran SJ

N° / No.	Tige VDI / VDI-shank	D <sub>1</sub>	D <sub>2</sub>	D <sub>3</sub>	A	L
40.2512SJ20	25	70	63	16	12	100
40.3012SJ20	30	70	63	16	12	100
40.4012SJ20	40	93	64	16	12	95
40.2512SJ30	25	70	63	16	12	100
40.3012SJ30	30	70	63	16	12	100
40.4012SJ30	40	93	64	16	12	95

## SpinJet Axial BMT

*SpinJet axial BMT*



### N° / No.

40...12...SJ...

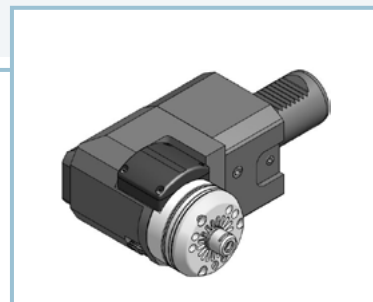
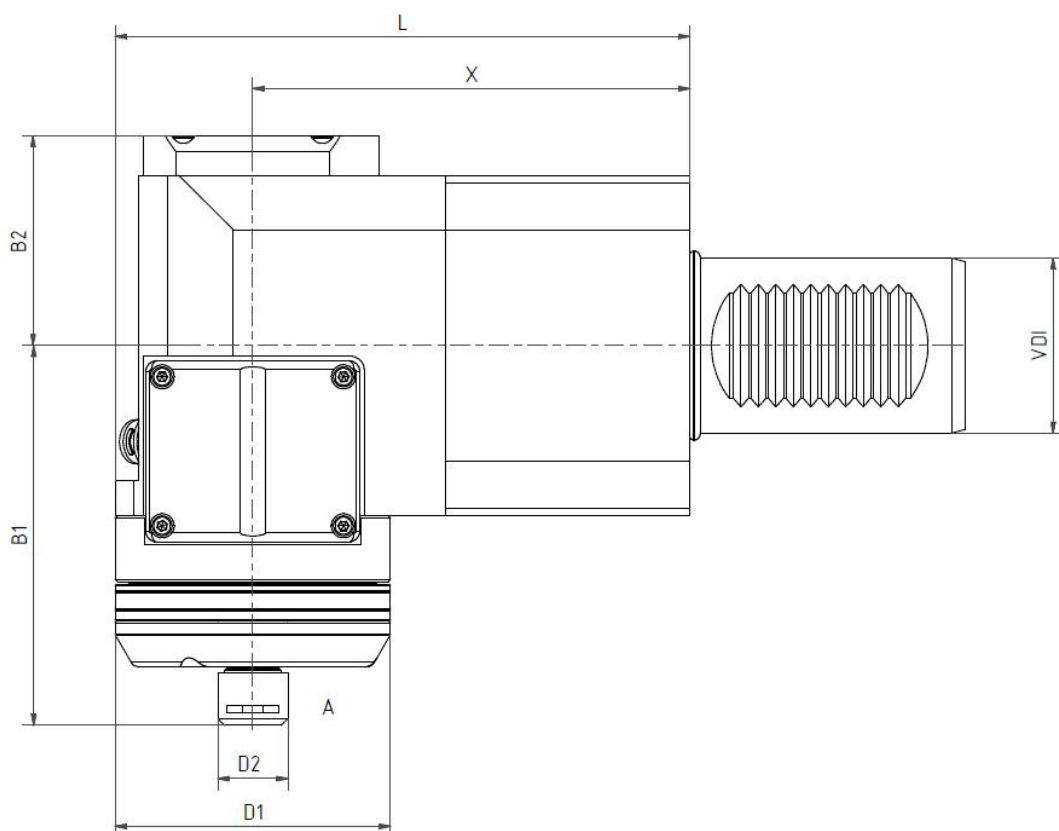
### Accessoires / Accessories

Affichage de la vitesse /  
rpm-display  
N° écran SJ

N° / No.	Tige BMT / BMT-shank	D <sub>1</sub>	D <sub>2</sub>	A	B	C	L
40.5512TW10SJ20	55	63	16	12	60	50	84,5
40.5512VL2SJ20	55	63	16	12	64	64	96
40.6012NLSJ20	60	63	16	12	84	94	95
40.5512TW10SJ30	55	63	16	12	60	50	84,5
40.5512VL2SJ30	55	63	16	12	64	64	96
40.6012NLSJ30	60	63	16	12	84	94	95

## SpinJet Radial VDI

SpinJet radial VDI



### N° / No.

60...12....R...SJ...

### Accessoires / Accessories

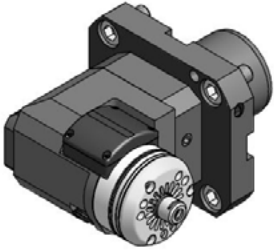
Affichage de la vitesse /  
rpm-display  
N° écran SJ

N° / No.	Tige VDI /VDI-shank	D <sub>1</sub>	D <sub>2</sub>	B <sub>1</sub>	B <sub>2</sub>	A	X	L
60.2512G200RLVSJ20	25	63	16	87	48	12	65	96,5
60.2512G200RLWSJ20	25	63	16	83	41	12	70	101,5
60.3012LCTXRLSJ20	30	63	16	83	41	12	100	131,5
60.3012TNC65RLSJ20	30	63	16	83	41	12	70	101,5
60.4012CTXRLSJ20	40	63	16	87	48	12	100	131,5
60.50125480RSJ20	50	63	16	87	48	12	70	101,5
60.2512G200RLVSJ30	25	63	16	87	48	12	65	96,5
60.2512G200RLWSJ30	25	63	16	83	41	12	70	101,5
60.3012LCTXRLSJ30	30	63	16	83	41	12	100	131,5
60.3012TNC65RLSJ30	30	63	16	83	41	12	70	101,5
60.4012CTXRLSJ30	40	63	16	87	48	12	100	131,5
60.50125480RSJ30	50	63	16	87	48	12	70	101,5



## SpinJet Radial BMT

SpinJet radial BMT

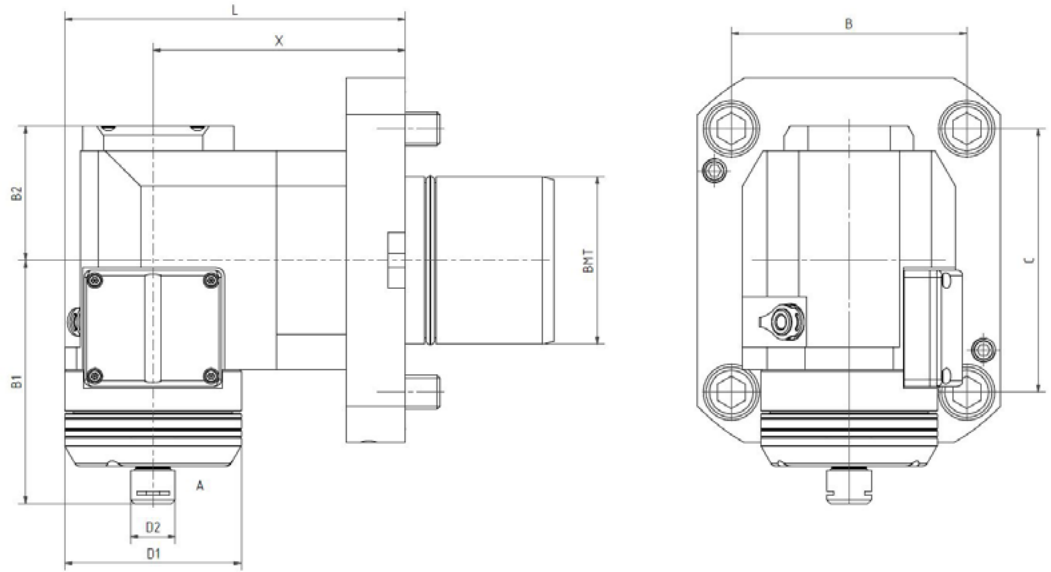


### N° / No.

60...12...SJ...

### Accessoires / Accessories

Affichage de la vitesse /  
rpm-display  
N° écran SJ



N° / No.	Tige BMT / BMT-shank	D <sub>1</sub>	D <sub>2</sub>	B <sub>1</sub>	B <sub>2</sub>	A	B	C	X	L
60.5512TW10SJ20	55	63	16	87	49	12	60	50	70	101,5
60.6012NLSJ20	60	63	16	87	48	12	84	94	90	121,5
60.5512TW10SJ30	55	63	16	87	49	12	60	50	70	101,5
60.6012NLSJ30	60	63	16	87	48	12	84	94	90	121,5

## SpinJet angle fixe VDI

SpinJet fixed angle VDI

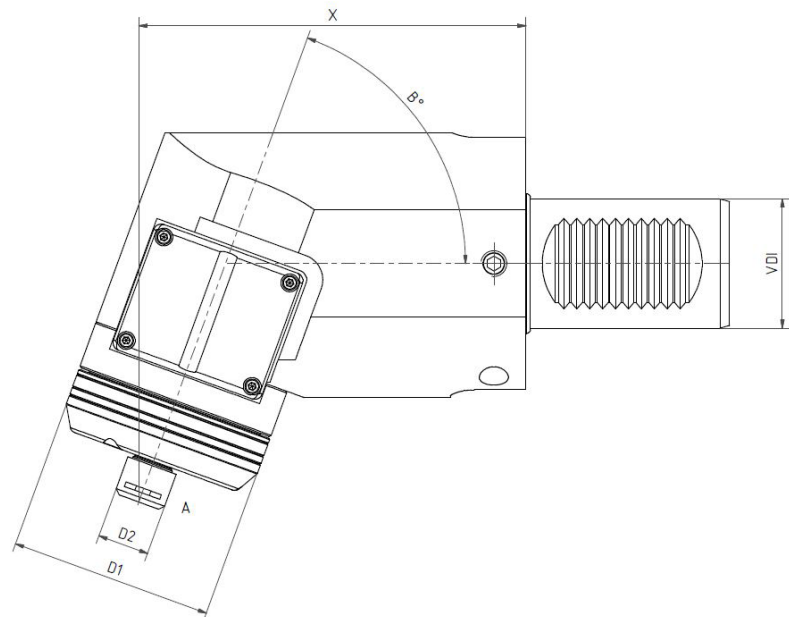


### N° / No.

60.4012CTXRLSJ...TKW70

### Accessoires / Accessories

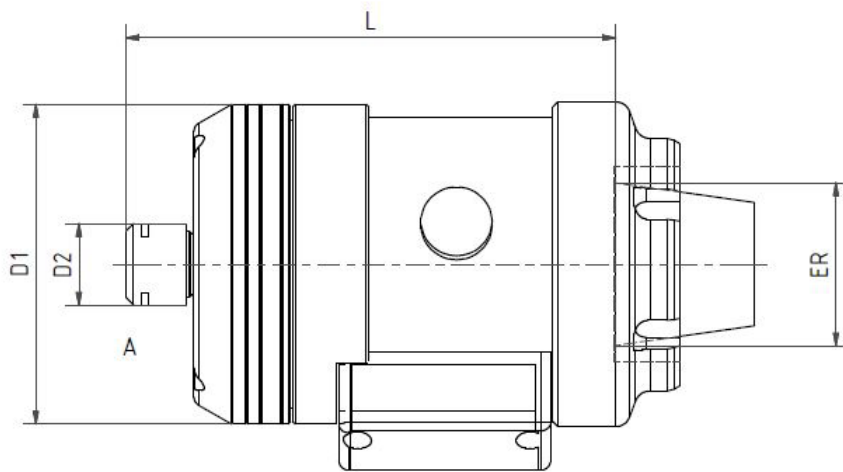
Affichage de la vitesse /  
rpm-display  
N° écran SJ



N° / No.	Tige VDI / VDI-shank	D <sub>1</sub>	D <sub>2</sub>	B	A	X
60.4012CTXRLSJ20TKW70	40	63	16	70	12	120
60.4012CTXRLSJ30TKW70	40	63	16	70	12	120



**SpinJet ER**  
SpinJet ER



**N° / No.**

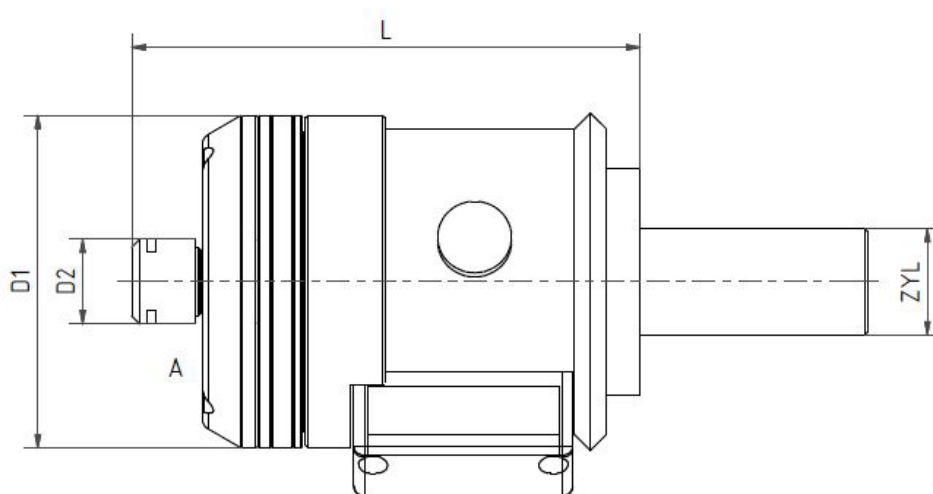
SJ...-ER32-

**Accessoires / Accessories**

Affichage de la vitesse /  
rpm-display  
N° écran SJ

N° / No.	Tige ER / ER-shank	D <sub>1</sub>	D <sub>2</sub>	A	L
SJ20-ER32-	32	63	16	12	97
SJ30-ER32-	32	63	16	12	97
SJ40-ER32-	32	63	16	12	97

**SpinJet ZYL**  
SpinJet ZYL



**N° / No.**

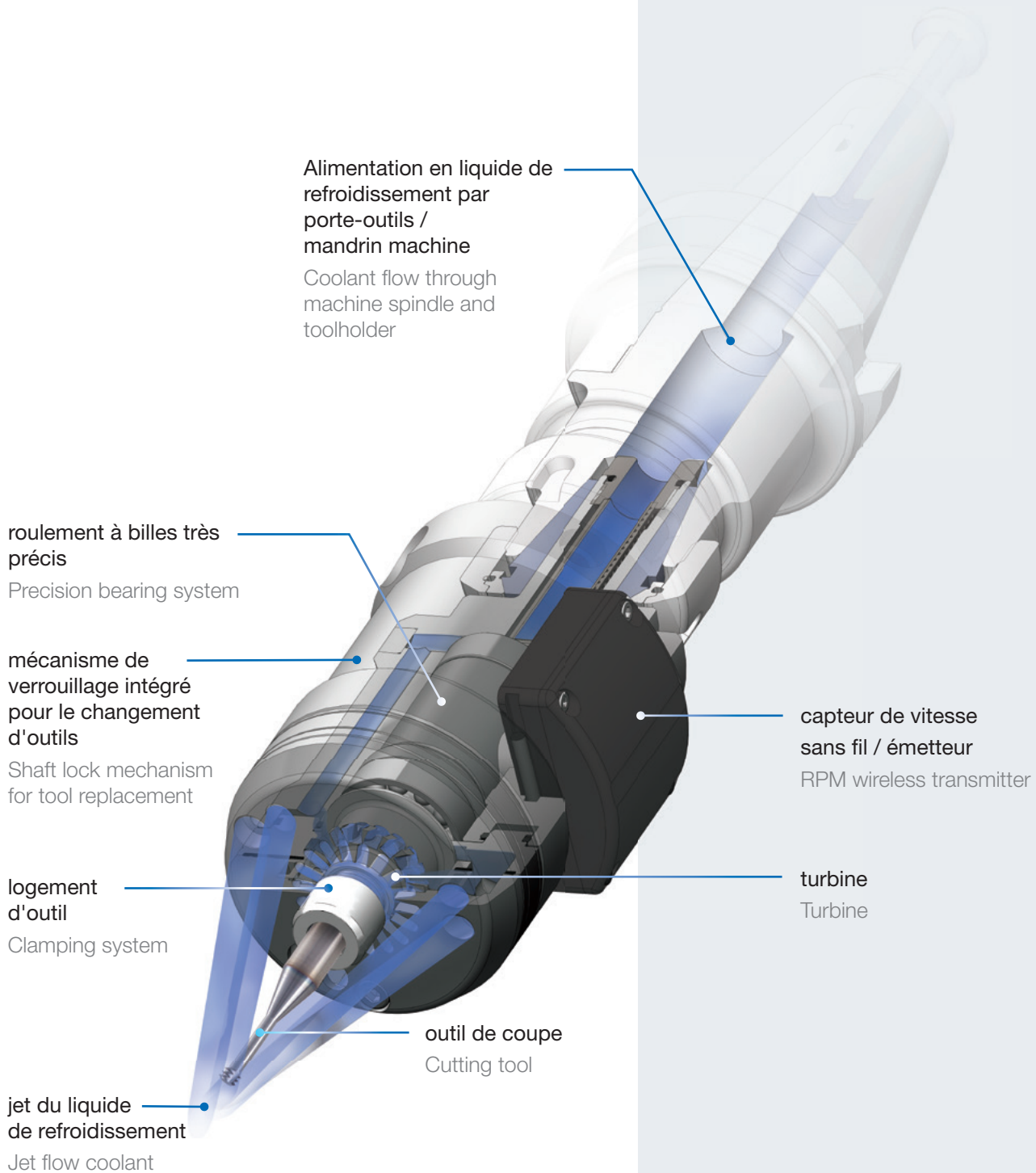
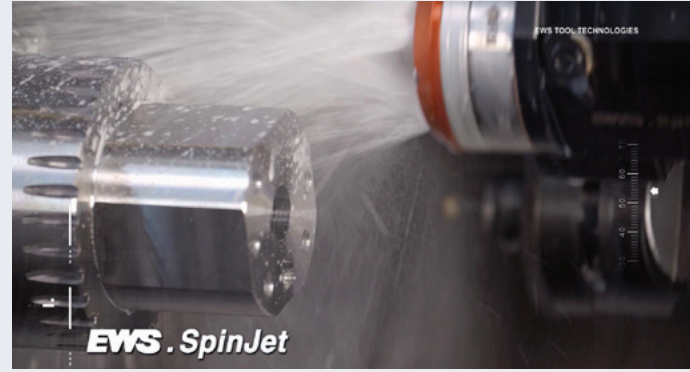
SJ...-ZYL20-

**Accessoires / Accessories**

Affichage de la vitesse /  
rpm-display  
N° écran SJ

N° / No.	Tige ZYL / ZYL-shank	D <sub>1</sub>	D <sub>2</sub>	A	L
SJ20-ZYL20-	20	63	16	12	97
SJ30-ZYL20-	20	63	16	12	97
SJ0-ZYL20-	20	63	16	12	97

# COOLANT-DRIVEN TECHNOLOGY







### **EWS Weigele GmbH & Co. KG**

Maybachstraße 1 · D-73066 Uhingen  
Telefon +49(0)7161-93040-100  
Telefax +49(0)7161-93040-30  
E-Mail: [info@ews-tools.de](mailto:info@ews-tools.de)  
[www.ews-tools.de](http://www.ews-tools.de)

### **WSW Spannwerkzeuge-Vertriebs GmbH**

Maybachstr. 1 · D-73066 Uhingen  
Telefon +49(0)7161-93040-100  
Telefax +49(0)7161-93040-30  
E-Mail: [info@wsw-collets.de](mailto:info@wsw-collets.de)  
[www.wsw-collets.de](http://www.wsw-collets.de)

### **Command Tooling Systems**

13931 Sunfish Lake Blvd NW  
Ramsey · MN 55303 USA  
Telefon +1-763-576-6910  
Telefax +1-763-576-6911  
[support@commandtool.com](mailto:support@commandtool.com)  
[www.commandtool.com](http://www.commandtool.com)

### **EWS Korea Co. Ltd.**

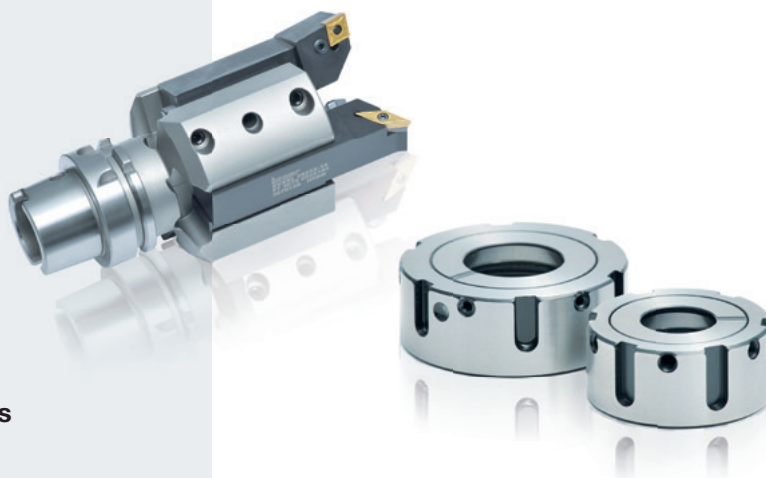
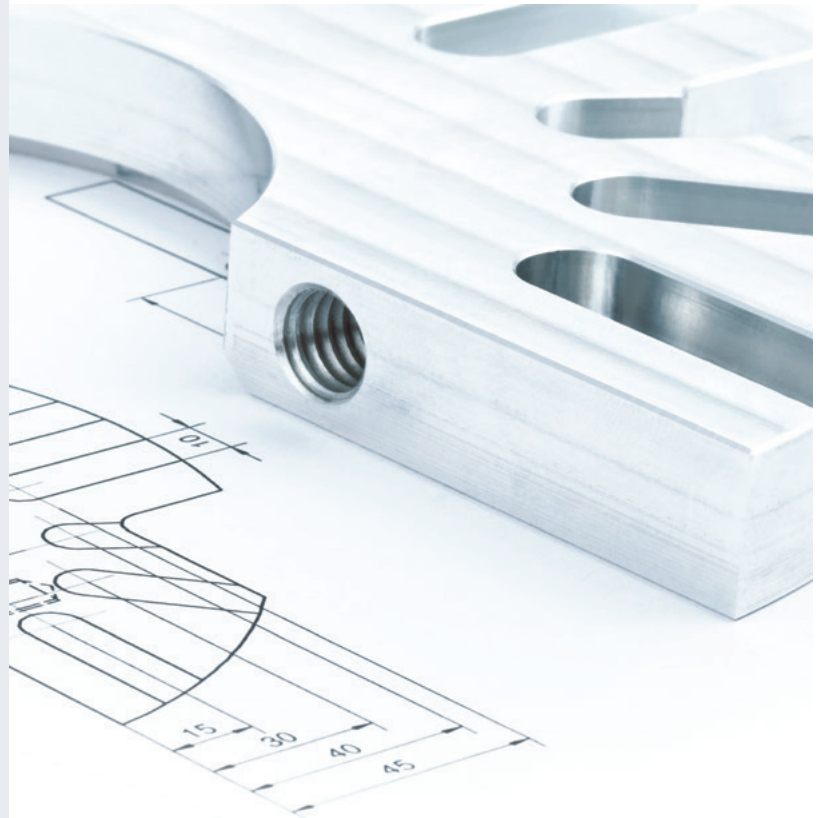
60-11 · Woongnam-Dong  
Changwon  
Kyoung-Nam Korea  
Telefon +82 55-267-8085  
Telefax +82 55-262-3118  
E-Mail: [info@ewskorea.co.kr](mailto:info@ewskorea.co.kr)  
[www.ewskorea.co.kr](http://www.ewskorea.co.kr)

### **EWS Ltd.**

Krassnaja str., 38  
600015 Vladimir  
Russland  
Telefon +7-4922-541160  
Telefax +7-4922-541160  
E-Mail: [info@ews-russland.ru](mailto:info@ews-russland.ru)  
[www.ews-russland.ru](http://www.ews-russland.ru)

### **EWS Tool Holder Technologies (Taicang) Co. Ltd**

Beijing East Road No. 88  
215400 Taicang · Jiangsu  
P. R. China  
Telefon +86 512 3306 2600  
Telefax +86 512 3306 2601  
E-Mail: [sales.cnews-tools.de](mailto:sales.cnews-tools.de)  
[www.ews-tools.cn](http://www.ews-tools.cn)



Zürichstrasse 15 - CH 2500 Biel/Bienne 8  
Tel. +41 32 344 60 60 - Fax +41 32 344 60 80  
[info@dihawag.ch](mailto:info@dihawag.ch) - [www.dihawag.ch](http://www.dihawag.ch)